



**NG Bailey**

# Manchester Aquatics Centre

Quality Control  
Pocket Guide



PASSION | INTEGRITY | EXCELLENCE



Copyright © 2022

All rights reserved.

No part of this book can be reproduced in any form or by written, electronic or mechanical, including photocopying, recording, or by any information retrieval system without written permission in writing by the author.

Published by Publishing Company here

Printed by Book Printing UK [www.bookprintinguk.com](http://www.bookprintinguk.com)

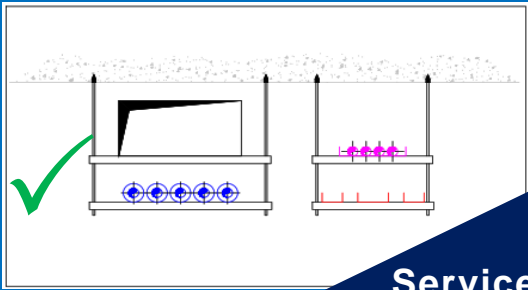
Remus House, Coltsfoot Drive, Peterborough, PE2 9BF

Printed in Great Britain

Although every precaution has been taken in the preparation of this book, the publisher and author assume no responsibility for errors or omissions. Neither is any liability assumed for damages resulting from the use of information contained herein.

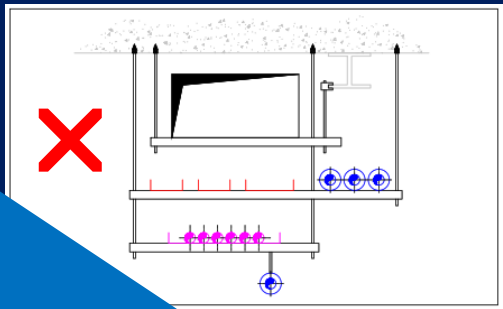


# Supports and Fixings



Services should be evenly distributed

Services should not be hung from brackets installed for other services.



Unistrut Channel used must be Unistrut branded.

# Supports and Fixings

The following systems are required to be torqued to correct levels

- All beam clamps and channel nuts used on framing systems and trapeze rods
  - All fixings to purlins, beams and metal deck
  - All torque controlled fixings into concrete
- Some examples of commonly used UniStrut fixings are listed below.

Manufacturers literature must be followed.

PNL

Part Number	Finish	Torque Setting
PNL06	ZP / HDG	12 Nm
PNS06	Stainless Steel	6.5 Nm
PNP06		
PNL08	ZP / HDG	28 Nm
PNS08	Stainless Steel	16 Nm
PNP08		
PNL10	ZP / HDG	55 Nm
PNS10	Stainless Steel	31.5 Nm
PNP10		
PNL12A	ZP / HDG	60 Nm
PNS12A	Stainless Steel	55 Nm
PNP12A		
PNL12	ZP / HDG	70 Nm
PNP12		
PNP16	ZP / HDG	125 Nm



PNL\*\*



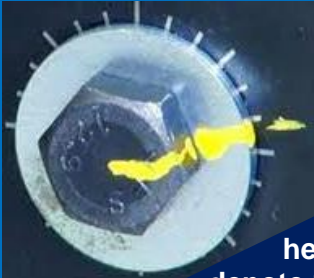
PNS\*\*



PNP\*\*

# Supports and Fixings

The installer completes installation of support system / fixing and tightens the nuts and bolts to the manufacturer published torque setting.



Once complete, the installer should mark the head of the hex nut with a marker pen to denote that it has been torqued to the correct setting. The mark should also be extended to the face of the adjoining clamp so that it is easy to identify if the nut has come loose or moved.

Upon completion of the supports and fixings for a zone NGB will undertake a check of 1 in 40 of all installed brackets, and fixings. Marking the fixings with a different colour pen.



# Torquing of flanges

DN	PN6	PN10	PN16
	Bolt Torque (Nm)	Bolt Torque (Nm)	Bolt Torque (Nm)
10	15	25	30
15	20	30	30
20	30	50	50
25	40	60	60
32	60	105	110
40	70	130	130
50	70	150	150
65	70	110	110
80	170	140	140
100	170	145	150
125	150	150	150
150	150	255	250
200	170	290	240
250	170	290	350
300	290	290	470
350	340	290	510
400	340	500	740

# Area Classification

Swimming pool environments are extremely corrosive to some materials. It is of high importance that you are aware of what material you should be using in your work area.

A series of area classification drawings have been produced stating what materials can be used in each area. These can range from stainless steel 316, hot dipped galv, pre galvanised, GRP or powder coated.

These drawings are to be consulted prior to works commencing.

If unsure speak to your supervisor or the NGB team and ask to review the Area Classification Drawings.



# Area Classification

The image below is an example of an Area Classification Drawing. The coloured areas indicate what materials must be used.

See the drawings for further information



If unsure speak to your supervisor or the NGB team and ask to review the Area Classification Drawings.

# Pressfit Pipework

Ensure operative is trained and installer card provided to NGB. NGB will provide unique installer ID.



Pipework is marked using correct socket depth gauge

The pipe must be marked with a "V" intersecting the depth mark. Full depth has been achieved when depth line is against the new fitting.



# Protection of Pipework



All stainless steel pipework must be foil wrapped with 0.06mm Aluminium pure foil. Foil should overlap by 50mm and orientated to shed water.

All brass / Gunmetal fittings Must be wrapped in Butyl P10 self-amalgamating Tape with minimum 50% overlap.



Pipework insulation must be fully vapour sealed externally. Further guidance is available from NGB technical bulletins and installation guidelines

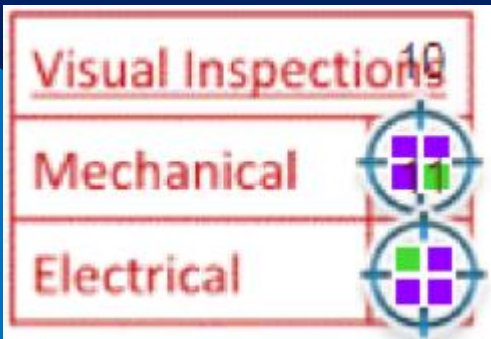
# Visual Inspections

All works will be visually inspected using the SnagR mobile App.

Log in details will be provided by NGB to supervisors to complete the first stage of each Visual Inspection.

Steps to carry out a Visual Inspection below:

In the SnagR app switch to Inspection mode by tapping the change mode button and navigate to the zone Visual Inspection target and open the relevant inspection.



# Visual Inspections

Complete the questionnaire whilst inspecting your works.

The named person signs and dates the visual inspection to confirm works are installed satisfactorily.

Sign-Off / Approval On Behalf Of Installer			
Company Name:	NG Bailey (Electrical)	Signature Of Inspector / Approver:	
Name Of Inspector / Approver:	John Smith	Sign-Off / Approval Date:	01/12/2016
Job Title / Position:	Electrician		

Change the workflow to “Ready For Verification” and Synchronise the SnagR app.

Change Workflow ✕

---

Workflow

Ready For Verification ▼

NGB management will receive a notification and will inspect the completed works.

For further guidance please speak with a member of the NGB team







**NG Bailey**



PASSION | INTEGRITY | EXCELLENCE